

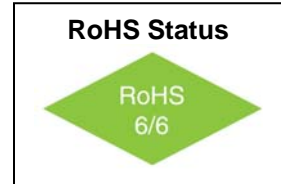
VFTX332

TCXO with Voltage Control Option 5x7mm, CMOS or Clipped Sine STRATUM III



Features

- Frequency range of 10MHz to 26MHz
- Digital Temperature Compensation
- Fundamental mode crystal
- High Reliability
- Low power consumption



Parameter	Symbol	Condition	Min	Typ	Max	Unit	Note
Frequency Range	F		10		26		See Chart Below
Frequency Stability	$\Delta F/F$	Vs. Operating Temperature -20°C to +70°C -40°C to +85°C			± 0.28 ± 0.50	ppm	Referenced to +25°C frequency
		Overall including 20 years aging			± 4.6	ppm	
Operating Temperature Range	T		-20° -40°		+70° +85°	°C	Order Code D Order Code G
Storage Temp.			-55		+125	°C	
Supply Voltage	Vcc		4.75 3.13	5.00 3.30	5.25 3.47	V	Order Code D Order Code E
Supply Current	Ic				3.5 6.0	mA	Clipped Sine CMOS
Voltage Control	Vc	For 3.3V model For 5.0V model	0 0.5		3.3 4.5	V	
Vc Input Impedance			100K			Ω	
Deviation range			± 5			ppm	VCTXCO version
Deviation slope		Monotonic positive					
Linearity			-10		+10	%	
Modulation BW			10			KHz	3dB BW
SSB Phase Noise		@ 100Hz @ 1 KHz @ 10 KHz		-120 -140 -148		dBc/Hz	Fo=12.8MHz
Phase Jitter		1 σ over 12KHz ~ 20MHz			3.5	ps	Fo=12.8MHz
Start up					2	ms	
Clipped Sine Output Level		10K Ω // 10pF load	0.8			Vp-p	See load diagram
CMOS Output	Voh	High Level	15pF load	0.9 Vcc		-	
	Vol	Low Level		-		0.1 Vcc	
		Symmetry		45		55	%
	Tr/Tf	Rise/Fall Time				8	ns
Tri-State		Disable			0.3 Vcc		Output is high Impedance
		Enable	0.7 Vcc				
Initial Frequency Accuracy		+25°C, Nominal Vcc and load, Vc=1.65 or 2.50 volts	-0.5		0.5	ppm	At time of shipment



VFTX332

TCXO with Voltage Control Option

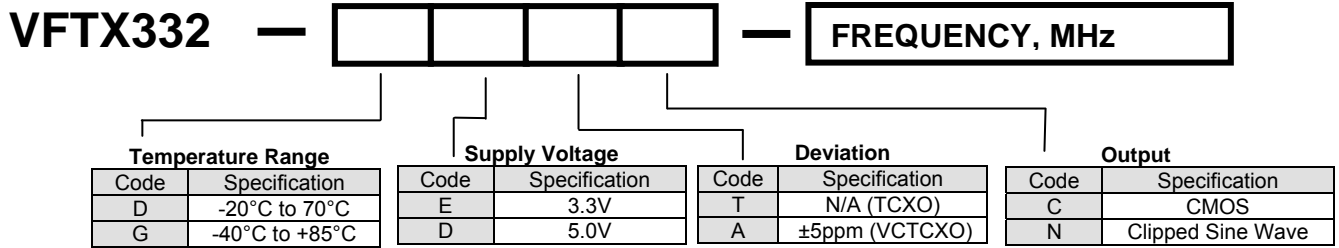
5x7mm, CMOS or Clipped Sine

STRATUM III

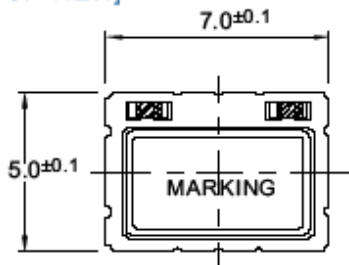


Available Frequencies	CMOS	10MHz, 12.8MHz, 13MHz, 16.384MHz, 19.44MHz, 20MHz, 26MHz
	Clip Sine Wave	10MHz, 12.8MHz, 13MHz, 19.44MHz

How to Order



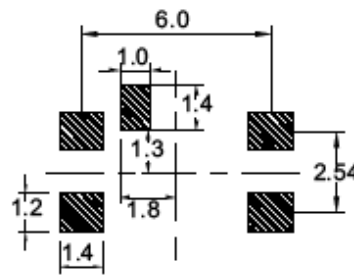
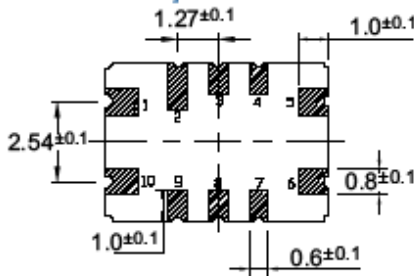
[TOP VIEW]



[SIDE VIEW]



[BOTTOM VIEW]



Recommended Soldering Pattern

PIN	Specification
1	Vcontrol or N/C
5	GND
6	Output
9	Tristate control
10	Vcc



VFTX332

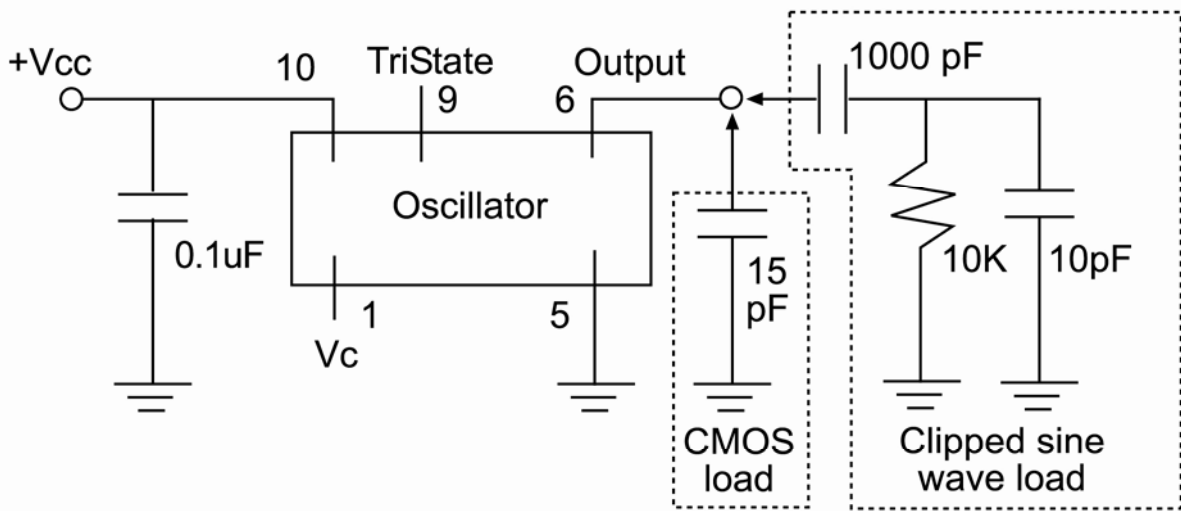
TCXO with Voltage Control Option

5x7mm, CMOS or Clipped Sine

STRATUM III



Parameter	Test Condition	Reference Standard
Thermal Shock	-55°C to +125°C, 10minutes, 200 cycles	MIL-STD-883D 1011.9, cond. B
High Temp. & humidity	85°C, 85% humidity , 500 hours	JIS-C 7022B-5, Cond. C
Low Temp.	-40°C, ±3°C, 500 hours	JIS-C-5021
Mechanical Shock	1500g, half sinewave, 0.5ms, 3 axis, 3 times	MIL-STD-883D 2002.3, cond. B
Vibration	20Hz to 20KHz, 1.52mm, 20g, 3 axis 4 hours sinewave	MIL-STD-883D 2007.2, cond. B
IR reflow	245°C ±5°C, 5±0.5 seconds (maximum)	



Load Diagram:

Include 0.1uF Vcc bypass capacitor. For clipped sine output, include 1000pf DC cut capacitor. For CMOS output, total circuit loading should be 15pf maximum.

